



Instruction V9

FOR VOLVO CARS MANUFACTURING – INSTRUCTION FOR USING V9

October 2023

The following instructions are valid for the V9 Quickbox used for overseas shipping where it is mandatory to use according to the VOLVO CARS PACKAGING REQUIREMENT.

Maximum unit load per Quickbox is 8 kg.

Mandatory:

- To use EMB153 for pallet label.
- The correct pallet, Half pallet for Quick box, art.No 2073404
(No other pallet is allowed to use!)
- Always fill up with a full layer of boxes to make a complete layer.
If necessary fill up with empty boxes.
- Maximum layers of boxes are 4 on each pallet.
- Use top lid and two straps as shown in the instruction.
- Do not use stretch film, use 2 straps on the longside only.

If you need additional support please contact us.

customersupport.int@pacson.se

www.international.pacson.se/volvocars

V9



www.international.pacson.se/volvocars | customersupport.int@pacson.se

Instruction V9



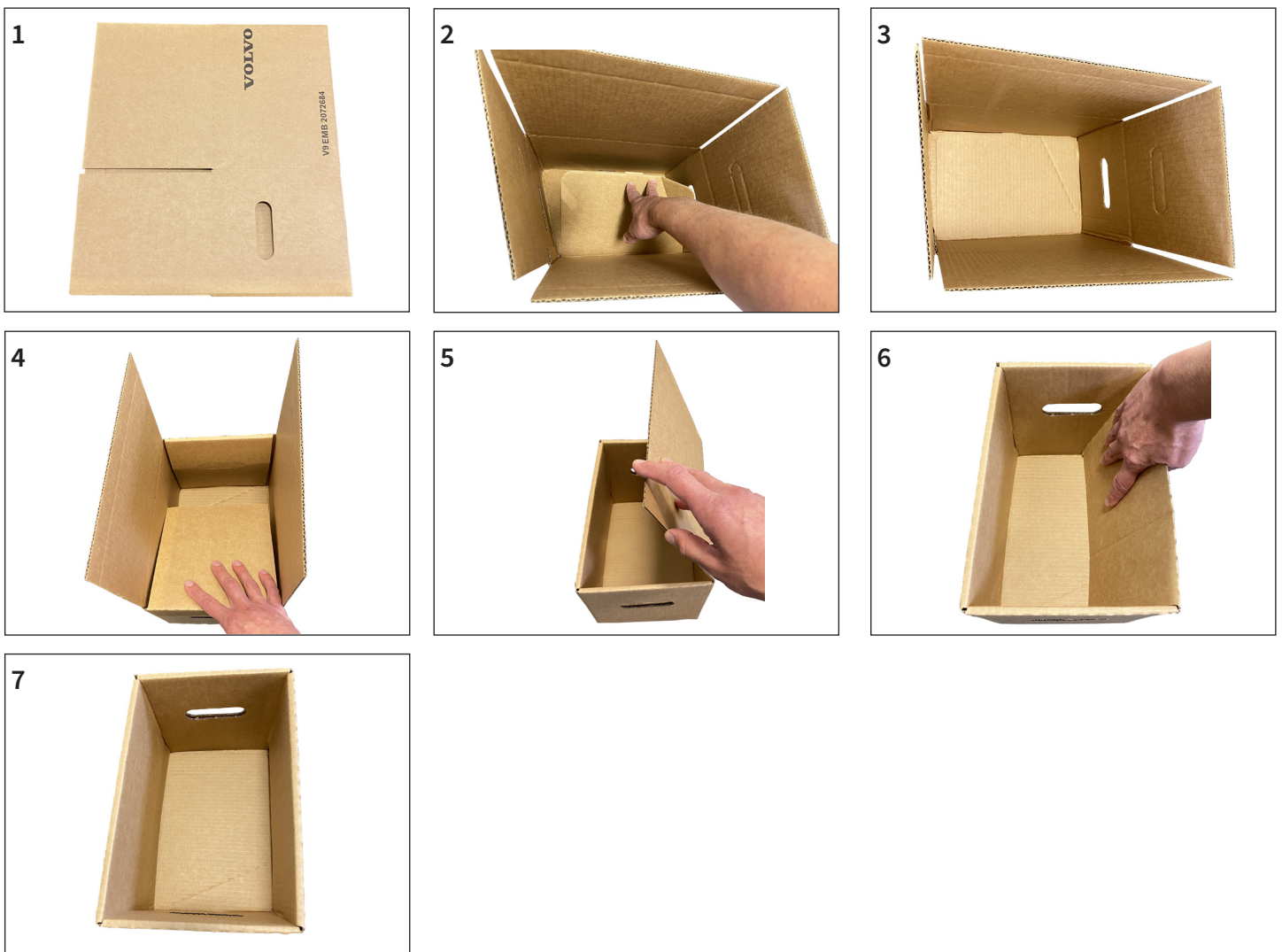
FOR VOLVO CARS MANUFACTURING – INSTRUCTION FOR USING V9

October 2023



| | Art.No | Art.No | Art.No |
|----|-----------------|---------------------|-----------------------|
| V9 | Tray 2072684 | Tray Lid 2072678 | Pallet Lid 2072736 |

EMB153 = Holder for Odette Label
Half pallet for Quick box Art.No 2073404



Instruction V9



FOR VOLVO CARS MANUFACTURING – INSTRUCTION FOR USING V9

October 2023



Always place the EMB153 left side for the Odette Label
- On the bottom layer
- On the box to the left as shown in picture
- Use the lid Art.No 2072736

Maximum amount of cases with V9 stacked on top each other is 3 layers.

Do not stack odd size boxes on top of V9 pallets.



300 kg

300 kg

300 kg



Odette Label holder Art.No EMB153



Lid Art.No 2072736

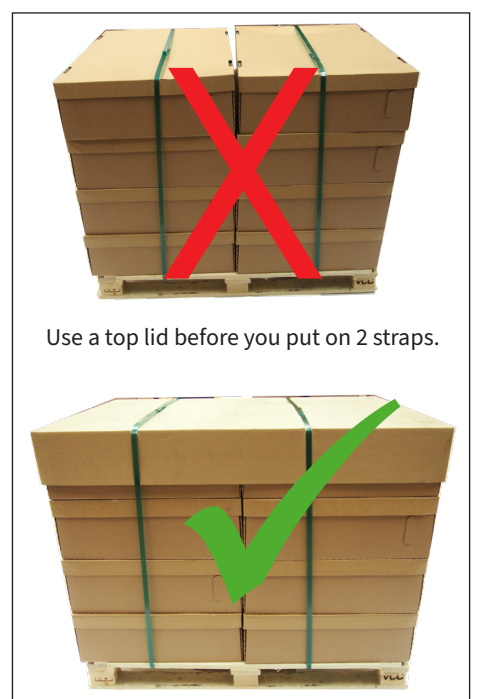
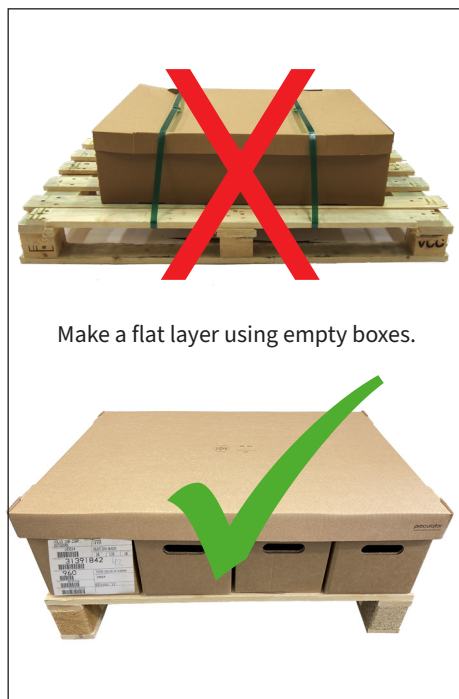
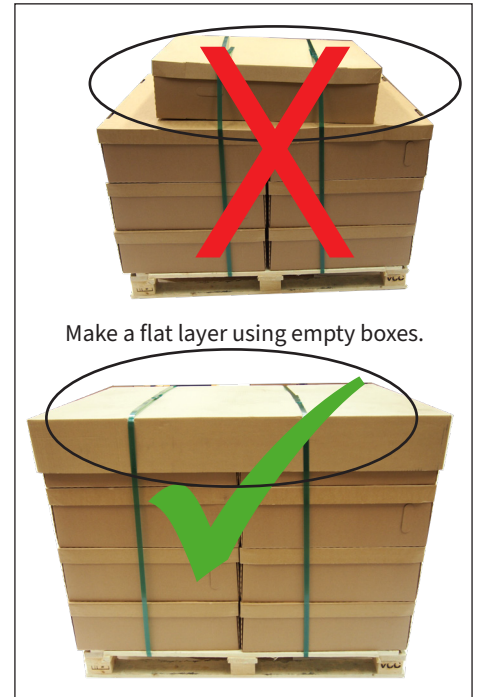
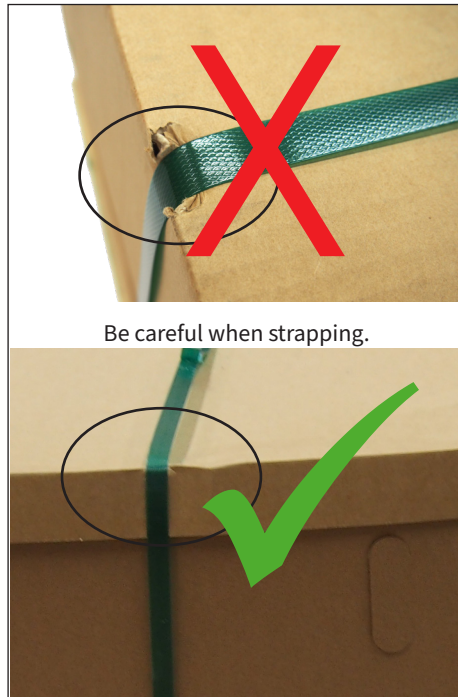
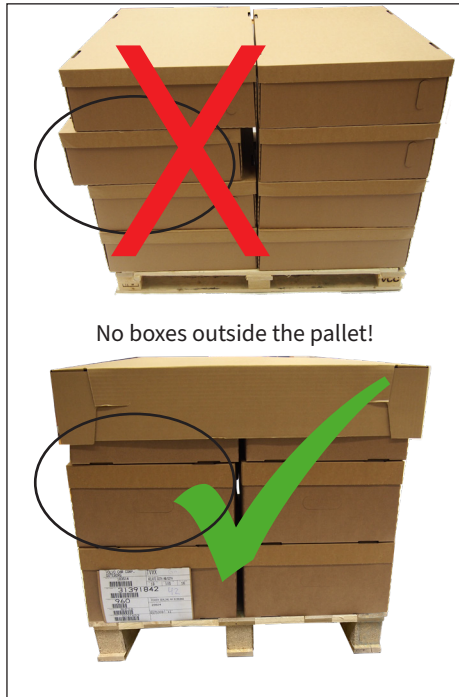


Instruction V9



FOR VOLVO CARS MANUFACTURING – INSTRUCTION FOR USING V9

October 2023



Instruction V9



FOR VOLVO CARS MANUFACTURING – INSTRUCTION FOR USING V9

October 2023

| Name | Art.No | Inside | Outside | MOQ | BCT |
|-----------------------------|---------|-------------|-------------|-----|--------------|
| Tray V9 Quick Box | 2072684 | 252x172x195 | 266x188x202 | 10 | 3147N/315 kg |
| Lid V9 Quick Box | 2072678 | 267x187x35 | 278x191x39 | 20 | |
| Lid Half pallet Quick box | 2072736 | 775x562x50 | 790x570x54 | 20 | |
| Half pallet for Quick box | 2073404 | – | 790x570x126 | 15 | |
| EMB153, Odette Label holder | EMB153 | – | – | 250 | |

